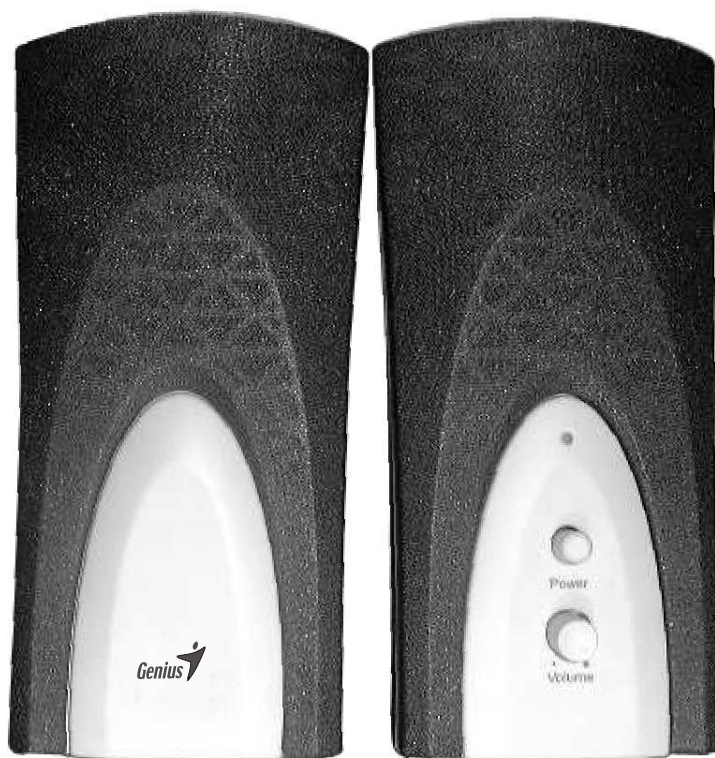


# ***SERVICE GUIDE***

**KYE SYSTEMS CORP.**



**SP-K06**

Version: 1.0

Total 13 Pages (Cover page included)

Revision History

Version	Date	Changes
1.0	Official Release	

## Table of Contents

<b>Revision History.....</b>	<b>1</b>
<b>Table of Contents.....</b>	<b>2</b>
<b>Getting Started.....</b>	<b>3</b>
Conventions Used in this Guide.....	3
Safety Precautions.....	3
<b>Chapter 1. How to Handle Defective Returns.....</b>	<b>4</b>
1.1 Overview.....	4
1.2 Problems.....	5
1.2.1 Power LED (indicator) Unlight.....	6
1.2.2 Does not work or one channel no sound.....	7
1.2.3 Noise.....	7
<b>Chapter 2. Specifications.....</b>	<b>8</b>
<b>Chapter 3. Block Diagram.....</b>	<b>9</b>
<b>Chapter 4. Exploded View.....</b>	<b>10</b>
<b>Chapter 5. Part List.....</b>	<b>11</b>
<b>Chapter 6. Important Notes.....</b>	<b>12</b>
<b>6.1</b> Packing Requirement for Sending the PCB Assembly by Post.....	<b>12</b>
<b>6.2</b> Short of Spare Parts while Repairing a Speaker System.....	<b>12</b>

## Getting Started

### Conventions Used in this Guide



#### Attention

Pay Special Attention: Instructions that are important to remember and may prevent mistakes.



Caution: Information that, if not followed, may result in damage to the product.

### Safety Precautions

The following precautions should be observed in handling the speaker described in this guide:

Place the speakers on a flat, level and stable surface.

Do not place the speakers in environments subject to mist, smoke, vibration, excessive dust, salty or greasy air, or other corrosive gases and fumes.

Do not drop or jolt the speakers.

Do not allow anything to drop into the subwoofer case through its ventilator, as it could result in fatal electric shock or fire.

Place the unit far enough from other equipments for good heat dissipation.

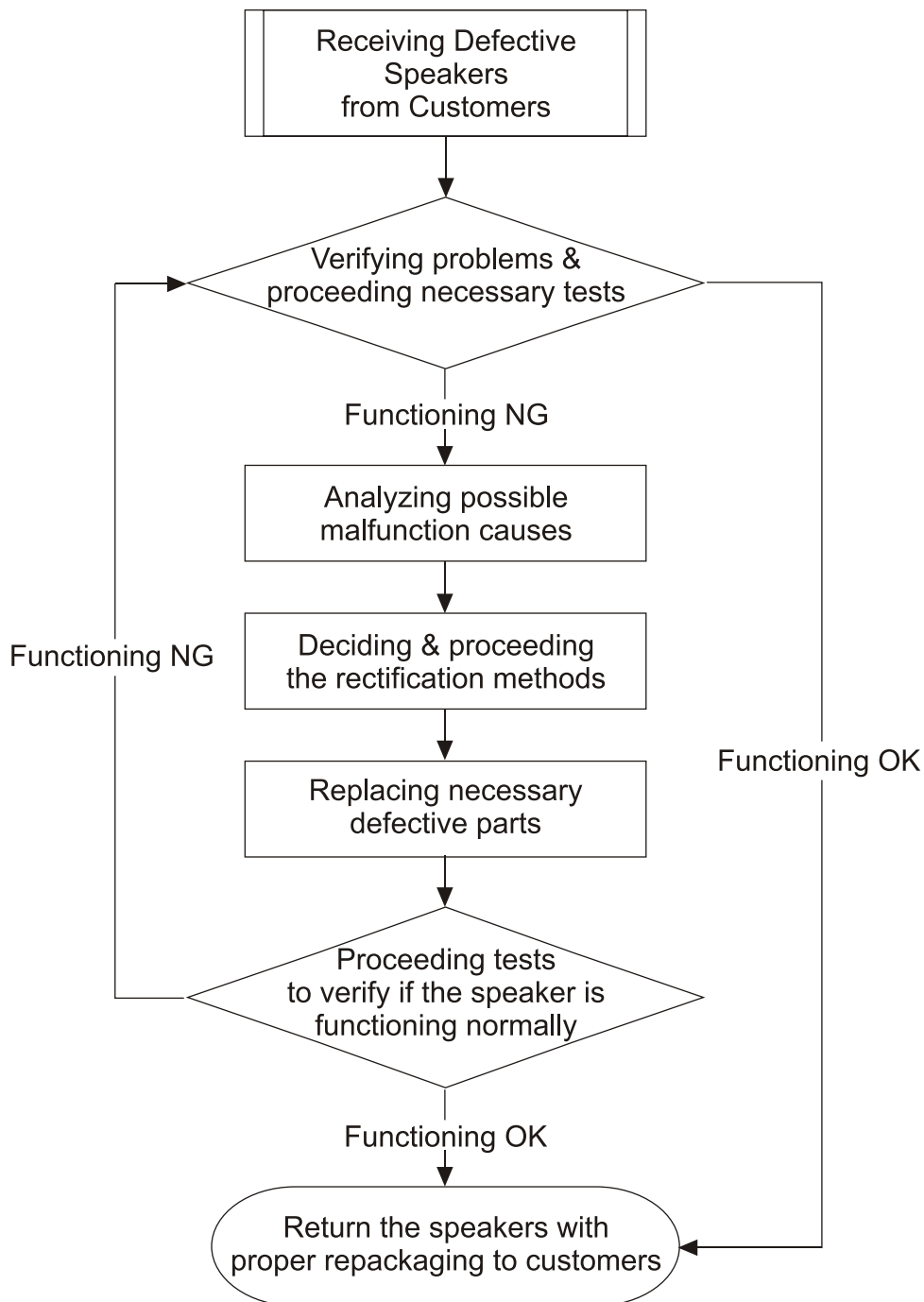
Disconnect the AC power cord from the AC outlet before performing any maintenance on the speakers.

Do not perform any maintenance with wet hand.

Prevent foreign substances, such as water, other liquids or chemicals, from entering the speakers while performing maintenance procedures on the speakers.

## Chapter 1. How to Handle Defective Returns

### 1.1 Overview



## 1.2 Problems

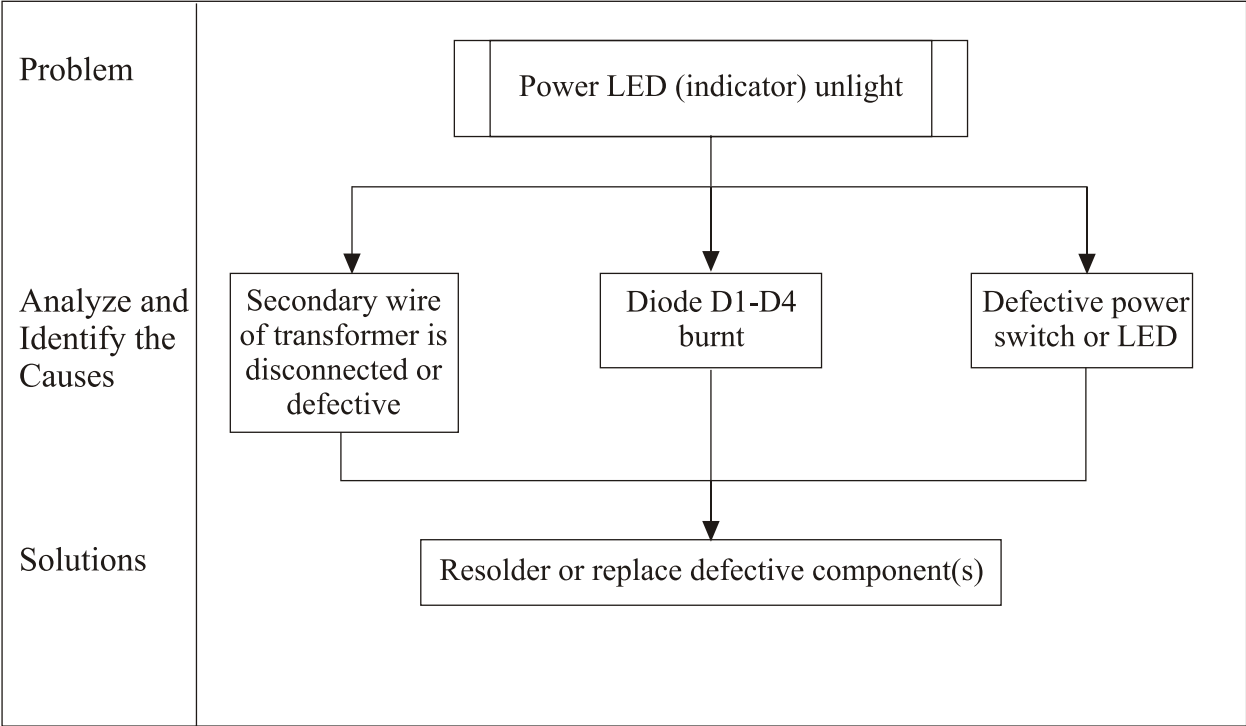
Item	Problem Descriptions
1.2.1	<u>Power LED (indicator) unlight</u>
1.2.2	<u>Does not work or one channel no sound</u>
1.2.3	<u>Noise</u>



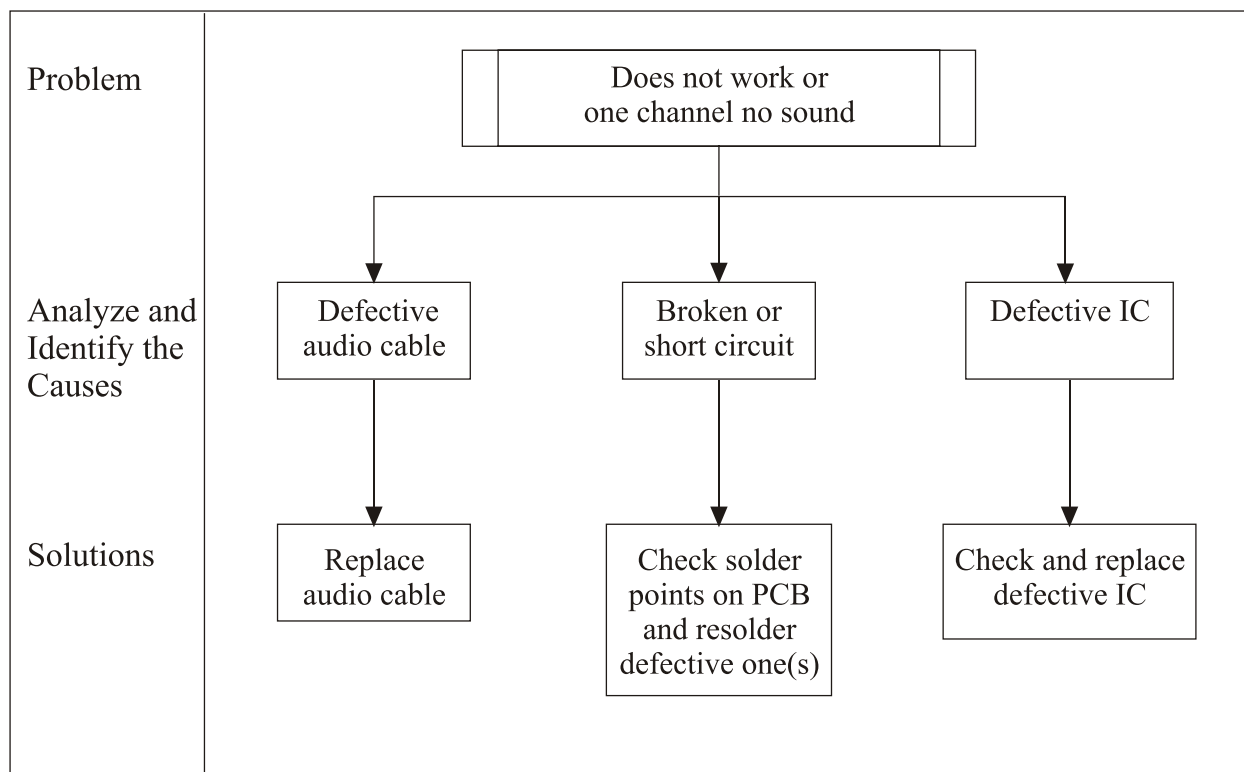
**Attention**

Please follow the numbered sequence marked withing parenthesis given in individual flow chart, in that this is the best-recommended sequence to rectify the problems.

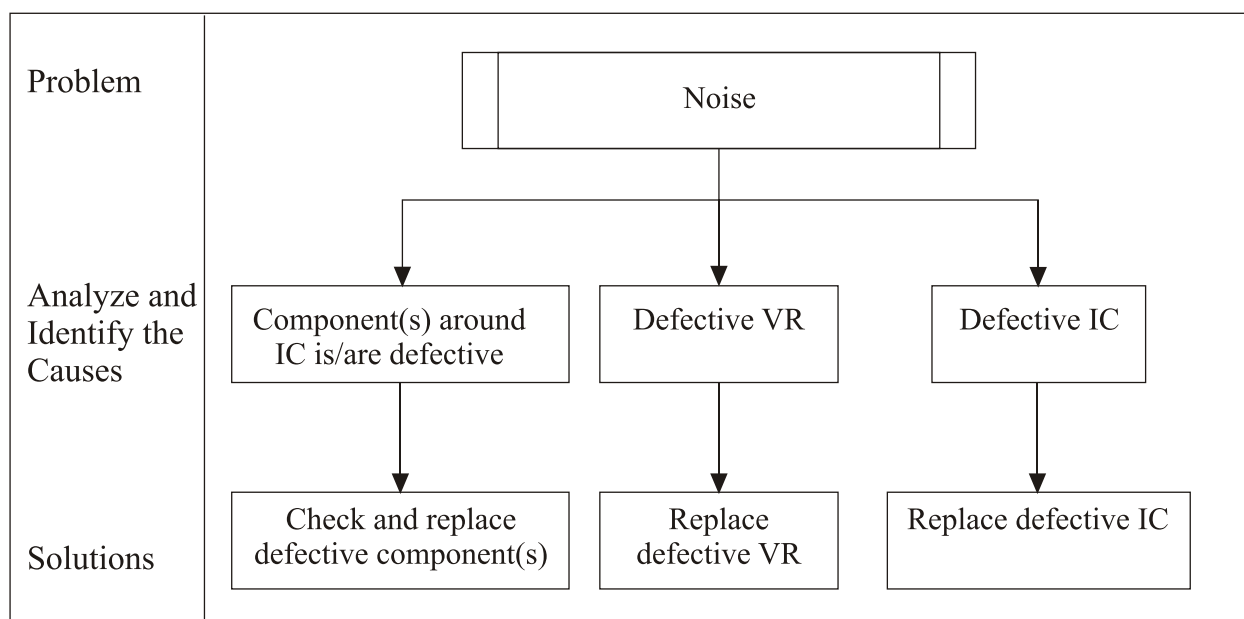
**1.2.1 Power LED (indicator) unlight**



## 1.2.2 Does not work or one channel no sound



## 1.2.3 Noise





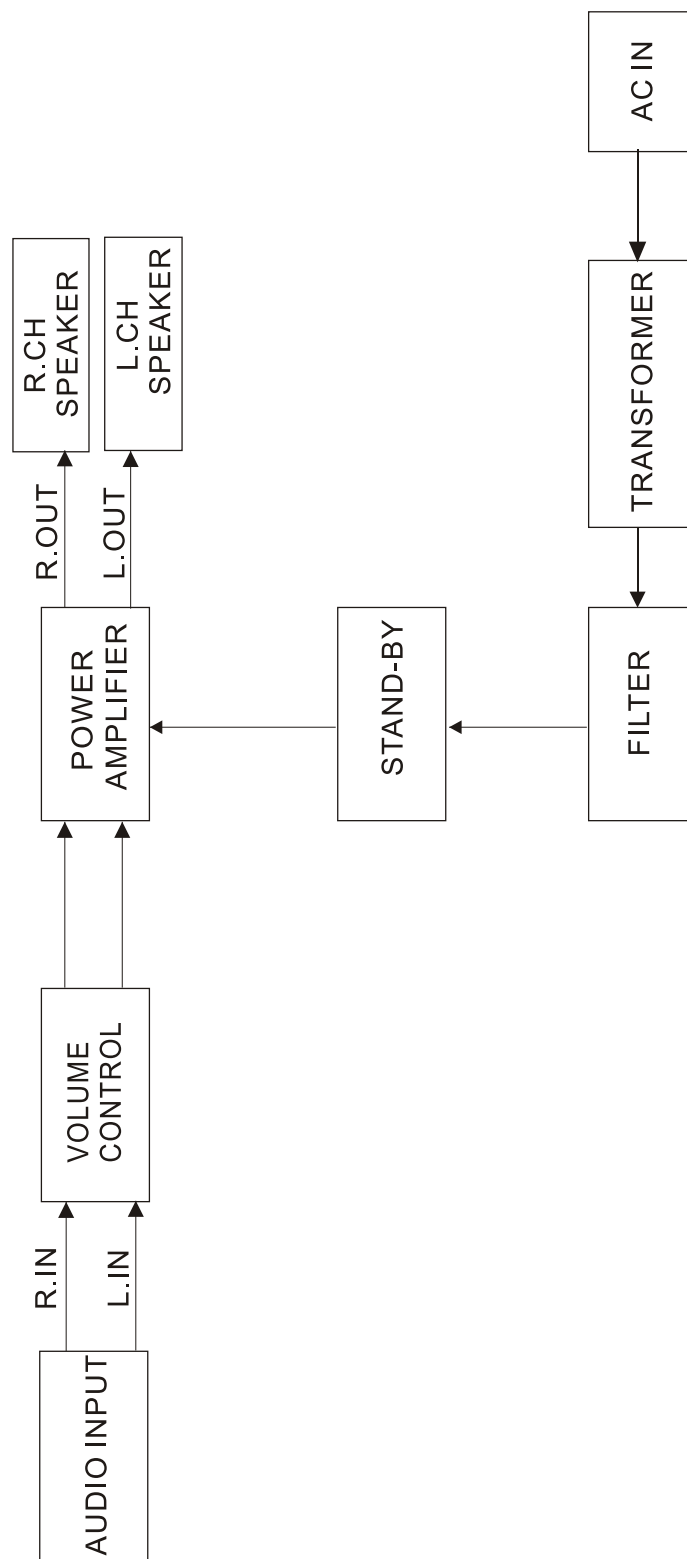
## Chapter 2. Specifications

NO.	DESCRIPTION	UNIT	NOMINAL	LIMIT
1	INPUT SENSITIVITY AT 10%	mV	220	220+/-50
2	DISTORTION AT 1 KHz	%	0.6	3
3	OUTPUT POWER AT 10% DISTORTION	W	0.9	0.8
4	S/N RATIO	dB	58	50
5	CHANNEL SEPARATION	dB	55	40
6	FREQUENCY RESPONSE			
	(DOWN 3dB)	(LOW) Hz	24	100
		(HIGH) KHz	7.5	7
7	HUM LEVEL (AT VOL. MIN.)	mV	1	2
	HUM LEVEL (AT VOL. MAX.)	mV	1.1	3
8	OPERATING VOLTAGE			
		MAX.255 VAC		
		MIN.205 VAC		

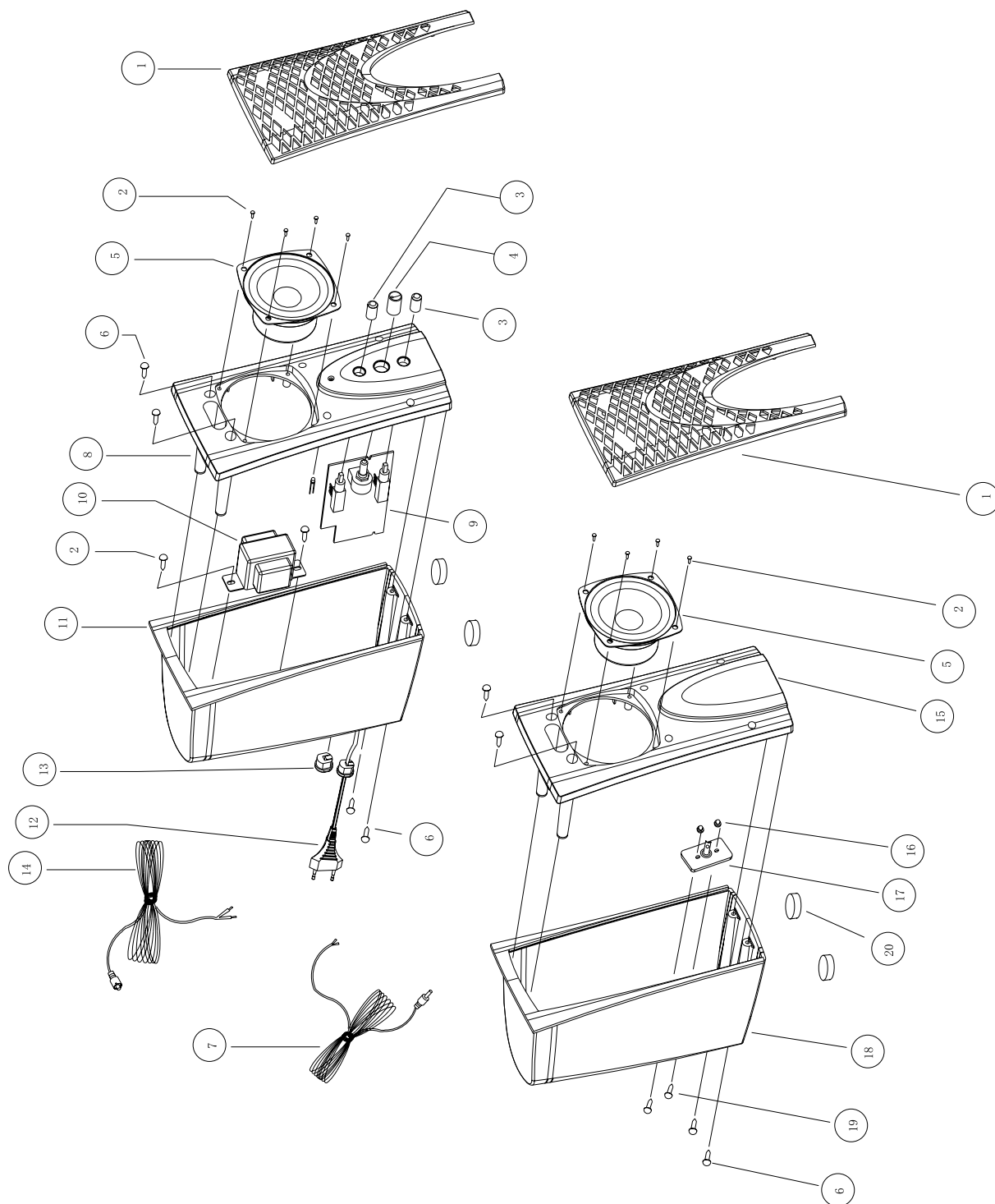
TEST CONDITION:

- 1) LOAD 4  $\Omega$
  - 2) RATED POWER 50 mW
- VOLUME AT MAX.

## Chapter 3. Block Diagram



## Chapter 4. Exploded View



**Chapter 5. Part List**

Ref. No.	Description	RS Part No.	Mfr's Part No.
1	Fabric Front, SP-K06, Blue 5A-19		T13590
2	Screw, TA3.0x8mm, Black		71027
3	Speaker, 3", 4 $\Omega$ , 3W, P3DUC-1N, Magnetically Shielded		T20346
4	Front Panel (R), SP-K06, PB Color		T13591
5	Button, SP-K10, PB Color, 8.6 $\Phi$ x15.5mm		T13589
6	Knob, SP-K10, PB Color, 11.3 $\Phi$ x18mm		T80465
7	Control & Amplifier PCB Assembly, SP-K06, 94V0		50429
8	Screw, TA3.0x10mm, Black		71026
9	Transformer, 230V, 9V/0.3A, CTP-80915U-2		T31350
10	Rear Cover (R), SP-K06, PB Color, AC Type		T13593
11	Strain Relief Bushing, SB4F-2K, White		80001
12	AC Cord, 4.3', PB Color VDE, H03VVH2-F		T40062
13	Speaker Cable, 4.8', PB Color, Zero to Zero		T42060
14	Screw, PTB3.0x12mm, White		T71041
15	Rear Cover (L), SP-K06, PB Color		T13594
16	Rubber Cushion, 10 $\Phi$ x1mm, Black, Adhesive		T86206
17	Front Panel (L), SP-K06, PB Color		T14572

## Chapter 6. Important Notes

### 6.1 Packing requirement for sending the PCB assembly by post

PCB assembly is a kind of sophisticated electronic circuit board. Well packing will be required when sending them by post.

- \* Some sophisticated IC components are mounted on the PCB assembly, hence it is necessary to pack each PCB assembly with a separate static protecting bag, in order to avoid static electricity.

- \* Reliable external packing is also very important when sending the PCB assembly by post, in that it would avoid unnecessarily lost or damage.

### 6.2 Short of spare parts while repairing a speaker system

If you are short of spare parts when you have some speaker systems waiting to be repaired, it would be recommended to take the necessary parts from one speaker system, so that you may have the as many speaker systems